

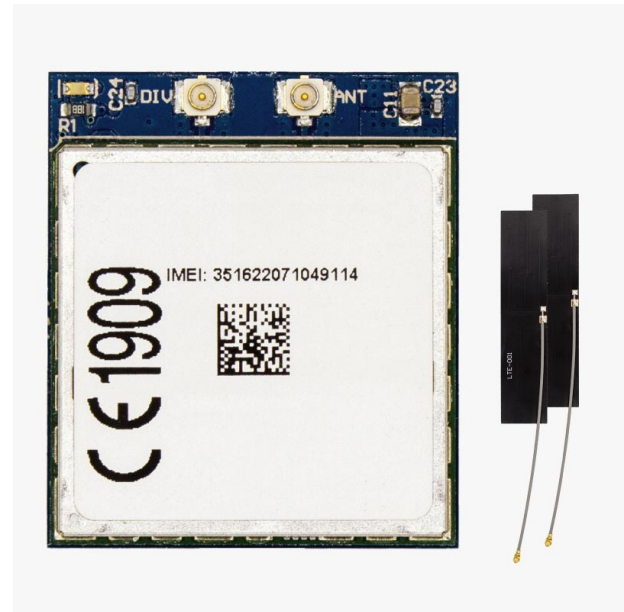
4G NTRIP Master

Includes:

- 4G+3G+2G radio module including NTRIP software (XBee socket compatible)
- 2x 4G+3G+2G antennas with integrated cable
- **Free PointPerfect RTK-SSR corrections until 2024**



More info about the product!



4G NTRIP Master has several different configurations to provide you with flexibility:

SKU	Variation Name
AS-XBEE-4G-EU-UFL-00	Europe
AS-XBEE-4G-NA-UFL-00	North America

Description

From any area with cellphone coverage, with ArduSimple 4G NTRIP Master, you will be able to use it as:

- NTRIP Client (to get corrections from your preferred correction service)
- NTRIP Server (to send your base corrections to a NTRIP caster like RTK2go.com)
- TCP socket client (to send position or any other message to your server)
- PointPerfect Client (This product has free RTK-SSR corrections until 31/12/2024. Later if you want you can get a subscription starting at only \$3.90 for 60 hours)

Just introduce your SIM card, configure the device following our [hookup guide](#), and let the 4G NTRIP Master do the rest. If you find the hookup guide too complex just add to the shopping cart our [Configuration Service](#) if you want to receive it already pre-configured.

Good to know:

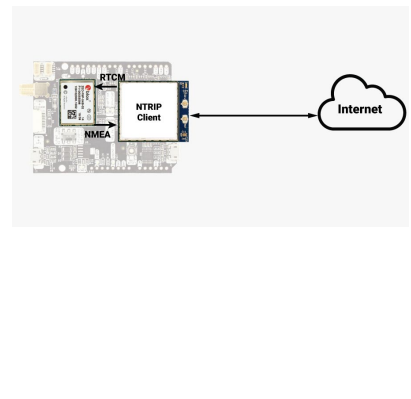
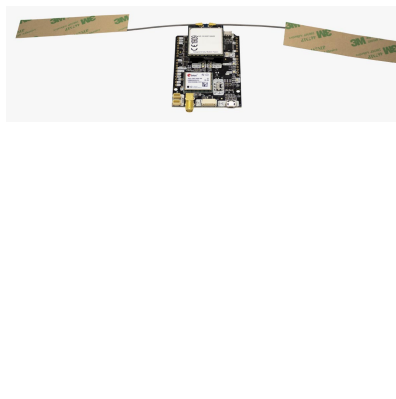
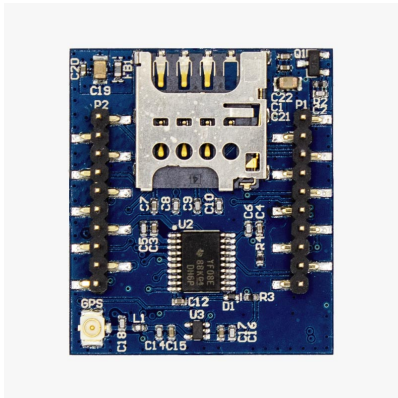
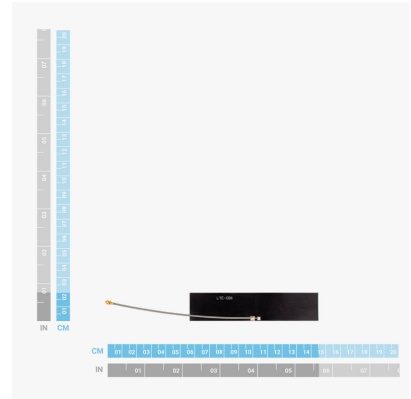
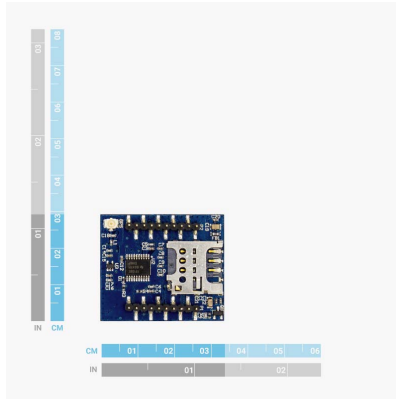
- Compatible with simpleRTK2B Pro, simpleRTK3B and simpleRTK2B-SBC.
- Compatible with u-blox Thingstream PointPerfect augmentation service.
- This product has free corrections until 31/12/2024
- If you want to use it with simpleRTK2B Budget, you will need a [Shield for Second XBee socket \(High Power\)](#).
- This product is not compatible with simpleRTK2Blite
- You will need a SIM card with internet access capabilities to use this product. MicroSIM form factor.
- Bulk pricing starting 50 units

Specifications

4G NTRIP Master features

- LTE FDD Cat.4 with dual antenna for Rx Diversity and MIMO
- Compatible with 2G, 3G and 4G networks
- Integrated SIM holder: MicroSIM
- Antenna type: external passive
- Antenna connector (modem side): uFL / IPEX
- Frequency (Europe variant):
 - For Europe, but also Middle East & Asia, compatible with:
 - 4G Bands (MHz): B1(2100), B3(1800), B7(2600), B8(900), B20(800)
 - 3G Bands (MHz): B2(2100), B8(900)
 - 2G Bands (MHz): B3(1800), B8(900)
- Frequency (North America variant):
 - For USA* & Canada, compatible with 4G and 3G networks.
 - 4G Bands (MHz): B2(1900), B4(1700), B5(850), B12/B13 (700)
 - 3G Bands (MHz): B2(1900), B5(850)
 - * Only compatible with AT&T, T-Mobile and virtual operators working on these networks. Not compatible by default with Verizon SIM cards, contact us in this case.
- Operating temperature Range: -40 to +85deg
- Documentation: RED, RoHS, FCC, IC, PTCRB

Image Gallery



Pinout

TOP VIEW

Description	Name	#	#	Name	Description
3.3-3.6V with up to 2A peak	VCC	1	20	ON/OFF	Connect to GND for always ON
Data out VCC level	TX	2	19		
Data in VCC level	RX	3	18		
Must connect to GND	GND	4	17		
Leave open for always ON	RESET	5	16	RTS	Feature disabled
5V to enable USB	V_USB	6	15	GND	Must connect to GND
	USB+	7	14	VREF	Must connect to VCC
	USB-	8	13	LED	1.8V output same as onboard LED
Feature disabled	DTR	9	12	CTS	Feature disabled
Must connect to GND	GND	10	11	GND	Must connect to GND



Documentation

User Guide	https://www.ardusimple.com/4g-ntrip-client-hookup-guide/
3D CAD STEP Files	https://www.ardusimple.com/3d-cad-step-files/
PCB Integration Guide	https://www.ardusimple.com/pcb-integration-guides/
Footprint	https://www.snapeda.com/search/?q=ardusimple

4G NTRIP Master includes free basic technical support. Contact info@ardusimple.com for more information.

Data and descriptions in this document are subject to change without notice. Product photos and pictures are for illustration purposes only and may differ from the real product appearance.